



CBCS SCHEME

17EC43

Fourth Semester B.E. Degree Examination, Dec.2019/Jan.2020 Control Systems

Time: 3 hrs.

Max. Marks: 100

Note: Answer any FIVE full questions, choosing ONE full question from each module.

Module-1

- 1 a. Define closed loop control systems and list its advantages and disadvantages with examples. (04 Marks)
- b. For the mechanical system shown in Fig.Q.1(b), write i) The mechanical network ii) the equations of motion and iii) the force-current analogous electrical network. (08 Marks)

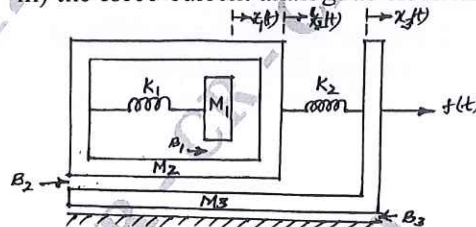


Fig.Q.1(b)

- c. For the system represented by the following equations, find the transfer function $X(S)/U(S)$ by signal flow graph technique.

$$x(t) = x_1(t) + \beta_3 u(t)$$

$$x_1'(t) = -a_1 x_1 + x_2 + \beta_2 u(t)$$

$$x_2'(t) = -a_2 x_2 + \beta_1 u(t)$$
 (08 Marks)

OR

- 2 a. Define analogous systems. Show that two systems shown in Fig.Q.2(a) are analogous systems, by comparing their transfer functions. (08 Marks)

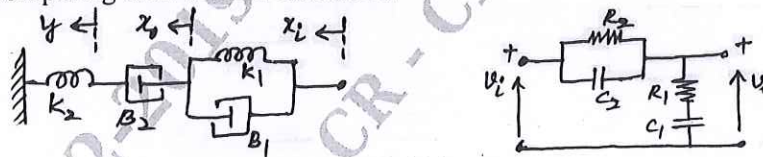


Fig.Q.2(a)

- b. For the block diagram shown in Fig.Q.2(b), determine the transfer function $C(S)/R(S)$ using block diagram reduction technique. (08 Marks)

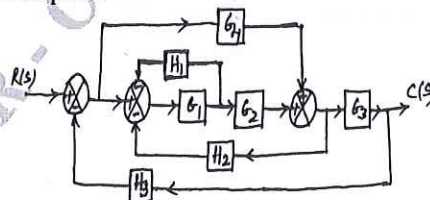


Fig.Q.2(b)

Important Note : 1. On completing your answers, compulsorily draw diagonal cross lines on the remaining blank pages.
2. Any revealing of identification, appeal to evaluator and /or equations written eg, 42+8 = 50, will be treated as malpractice.

- c. Define the following terms in connection with signal flow graph:
- Node
 - Forward path gain
 - Feedback loop
 - Non-touching loops.

(04 Marks)

Module-2

- 3 a. Define the following time response specifications for an underdamped second order system:
- Rise time, t_r
 - Peak time, t_p
 - Peak-overshoot, M_p
 - Settling time, t_s
- (04 Marks)
- b. A system is given by the differential equation $y''(t) + y'(t) + y(t) = x(t)$, where $y(t)$ is the output. Determine all time domain specifications for unit step input. (08 Marks)
- c. The open loop transfer function of a unity feedback system is given by $G(s) = \frac{K}{S(ST+1)}$
- By what factor should the amplifier gain K be multiplied in order that the damping ratio is increased from 0.2 to 0.8?
 - By what factor should K be multiplied so that the system overshoot for unit step excitation is reduced from 60% to 20%?
- (08 Marks)

OR

- 4 a. Derive the expressions for i) Rise time, t_r and ii) Peak overshoot, M_p for the underdamped response of a second order system for a unit step input. (06 Marks)
- b. For the system shown in Fig.Q.4(b), compute the values of K and τ to give an overshoot of 20% and peak time of 2 sec for an unit step excitation. (08 Marks)

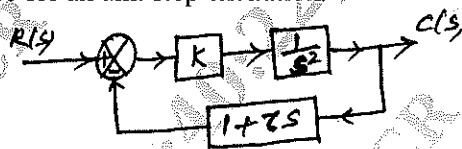


Fig.Q.4(b)

- c. Find the position, velocity and acceleration error constant for a control system having open loop transfer function $G(S)H(S) = \frac{10}{S(S+1)}$. Also find the steady state error for the input $r(t) = 1 + t$. (06 Marks)

Module-3

- 5 a. State and explain Routh's stability criterion for determining the stability of the system and mention its limitations. (06 Marks)
- b. Determine the number of roots that are
- in the right half of s-plane
 - on the imaginary axis and
 - in the left half of s-plane
- for the system with the characteristic equation $s^6 + s^5 - 2s^4 - 3s^3 - 7s^2 - 4s - 4 = 0$. (06 Marks)
- c. Sketch the root locus plot of a certain control system, whose characteristic equation is given by $s^3 + 10s^2 + ks + k = 0$, comment on the stability. (08 Marks)

Module-5

- 9 a. State the advantages of state variable analysis. (04 Marks)
 b. Obtain the state model for the electrical system shown in Fig.Q.9(b). Take $i_o(t)$ as output. (06 Marks)

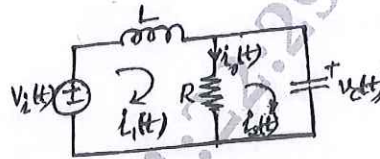


Fig.Q.9(b)

- c. For a system represented by the state model

$$\begin{bmatrix} \dot{x}_1(t) \\ \dot{x}_2(t) \end{bmatrix} = \begin{bmatrix} 0 & 1 \\ -3 & -4 \end{bmatrix} \begin{bmatrix} x_1(t) \\ x_2(t) \end{bmatrix} + \begin{bmatrix} 0 \\ 1 \end{bmatrix} u(t) \text{ and } y(t) = \begin{bmatrix} 1 & 0 \end{bmatrix} \begin{bmatrix} x_1(t) \\ x_2(t) \end{bmatrix}$$

Determine:

- i) The state transition matrix, $\phi(t)$ and
 ii) The transfer function of the system.

(10 Marks)

OR

- 10 a. Define state transition matrix and list its properties. (04 Marks)

- b. Consider a state model with matrix $A = \begin{bmatrix} 0 & 1 & 0 \\ 3 & 0 & 2 \\ -12 & -7 & -6 \end{bmatrix}$. Determine the model matrix M. (06 Marks)

- c. Obtain the time response of the following non homogeneous state equation:

$$\begin{bmatrix} \dot{x}_1(t) \\ \dot{x}_2(t) \end{bmatrix} = \begin{bmatrix} 1 & 0 \\ 1 & 1 \end{bmatrix} \begin{bmatrix} x_1(t) \\ x_2(t) \end{bmatrix} + \begin{bmatrix} 1 \\ 1 \end{bmatrix} u(t)$$

where $u(t)$ is a unit step function, when $x(0) = \begin{bmatrix} 1 \\ 0 \end{bmatrix}$

(10 Marks)

OR

- 6 a. For a system with characteristic equation $s^4 + ks^3 + s^2 + s + 1 = 0$, determine the range of K for stability. (04 Marks)
- b. Determine the values of 'k' and 'a' for the open loop transfer function of a unity feedback system is given by $G(s) = \frac{K(s+1)}{s^3 + as^2 + 3s + 1}$, so that the system oscillates at a frequency of 2rad/sec. (06 Marks)
- c. Draw the root locus diagram for the system shown in Fig.Q.6(c), show all the steps involved in drawing the root locus. Determine:
- The least damped complex conjugate closed loop poles and the value of 'K' corresponding to these roots
 - Minimum damping ratio. (10 Marks)

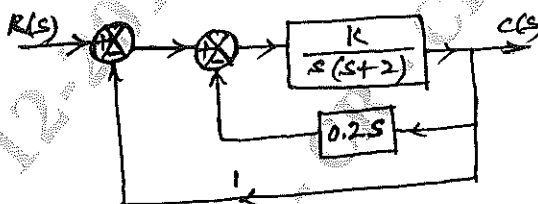


Fig.Q.6(c)

Module-4

- 7 a. Define the following terms in connection with bode plots:
- Gain cross over frequency
 - Phase crossover frequency
 - Gain margin
 - Phase margin. (04 Marks)
- b. A negative feedback control system is characterized by an open loop transfer function $G(S)H(S) = \frac{20}{S(S+1)(S+2)}$. Sketch the polar plot and hence determine W_{gc} , W_{pc} , G_M and P_M . Comment on the stability. (06 Marks)
- c. A unity feedback control system has $G(s) = \frac{100(1+0.1s)}{s(s+1)^2(0.01s+1)}$. Draw the Bode plots and hence determine W_{gc} , W_{pc} , G_M and P_M . Comment on the stability. (10 Marks)

OR

- 8 a. A unity feedback control system has $G(s) = \frac{200(s+2)}{s(s^2+10s+100)}$. Draw the bode plots and hence determine stability of the system. (10 Marks)
- b. Using Nyquist stability criterion, find the range of K for closed loop stability for the negative feedback control system having the open loop transfer function $G(S)H(S) = \frac{K}{S(S^2+2S+2)}$. (10 Marks)