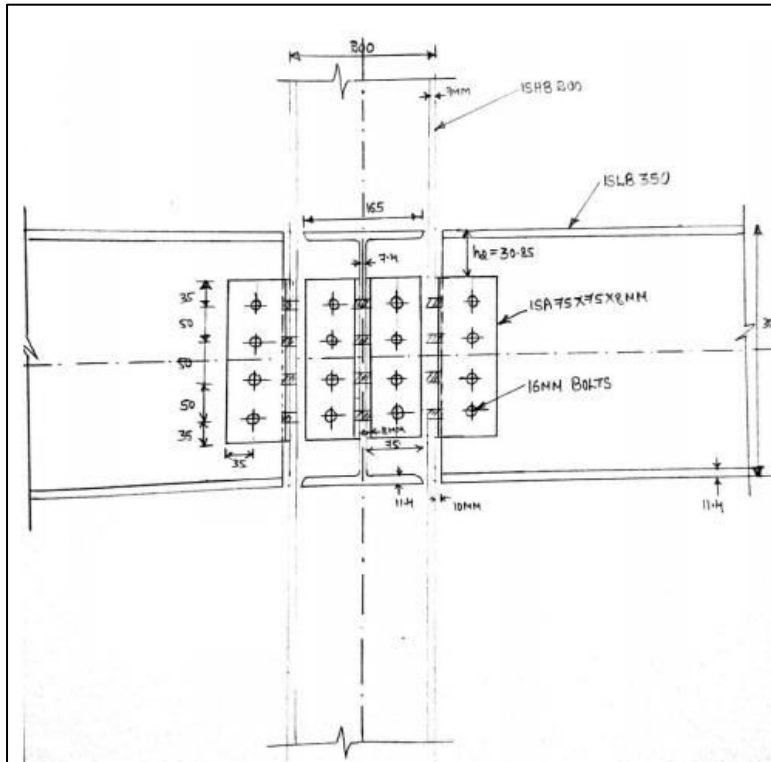




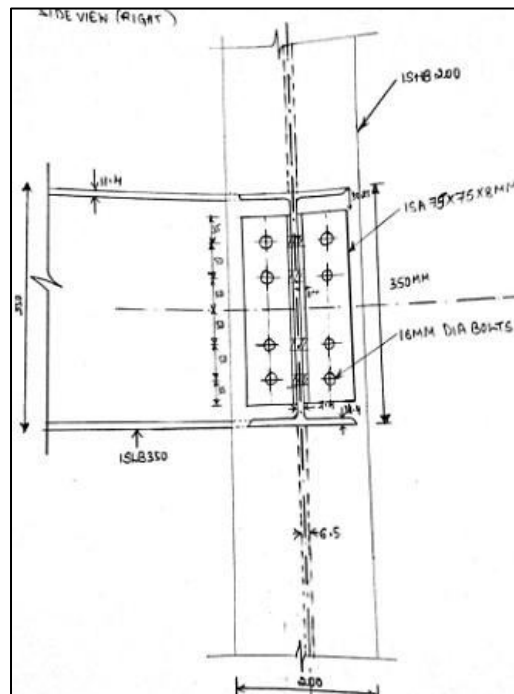
**Feb. - June 2017 | Design and drawing of Steel Structures. (10CV82 |
Sem VIII - A & B |
Asst. Prof. K Shijina
First Internal Assessment test solutions**

Q1.

FRONT VIEW

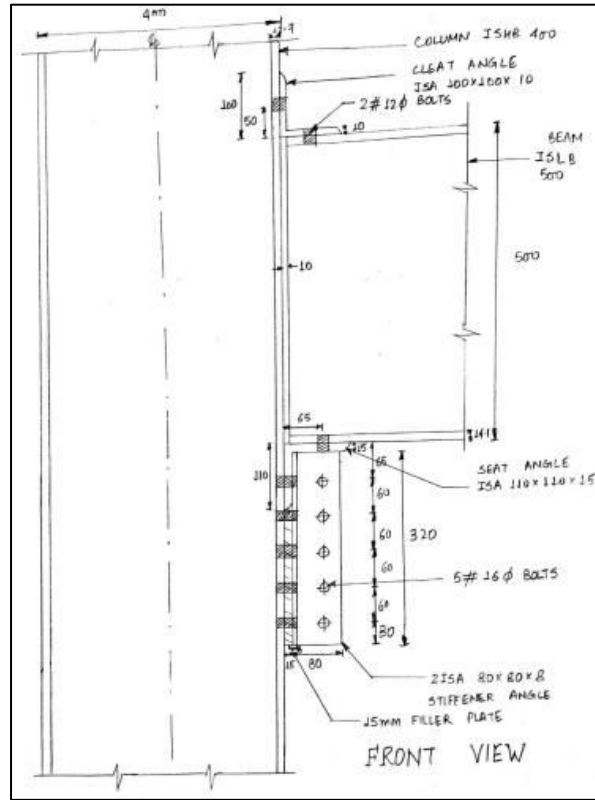


SIDE VIEW

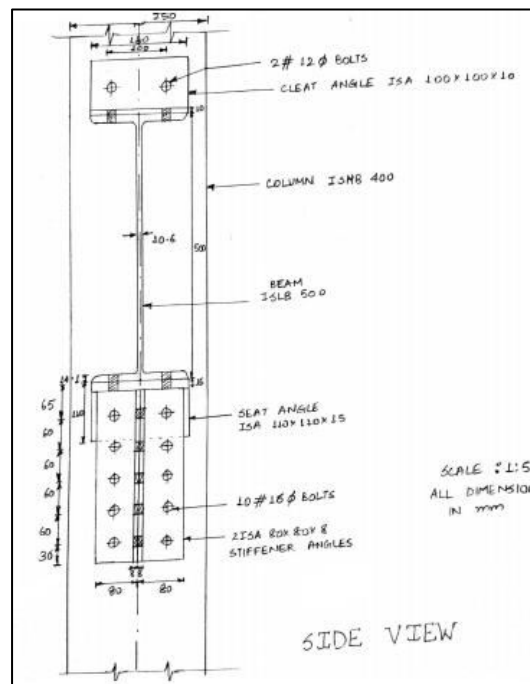


Q2

FRONT VIEW

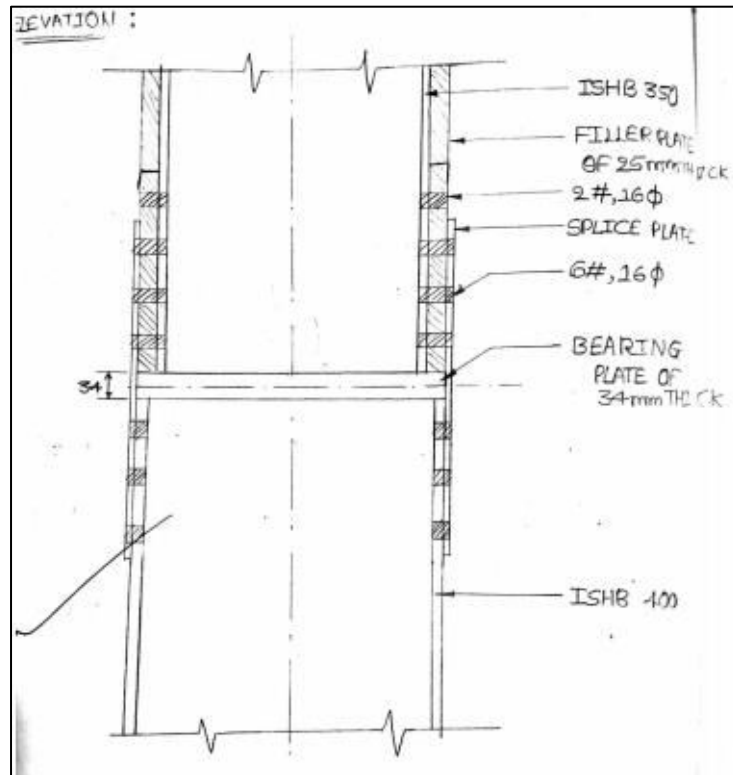


SIDE VIEW



Q3

FRONT VIEW



SIDE VIEW

