

USN



Internal Assessment Test 1 – March 2019

Sub:	Quantity Survey and contract Management					Sub Code:	15CV81	Branch:	Civil
Date:	5/3/2019	Duration:	90 min	Max Marks:	50	Sem/Sec:	VIII – A & B		OBE

Answer all questions

		MARKS	CO	RBT
1	Determine the quantities of the following items.			
(a)	C/C distance of long wall and short wall (or) total c/c length of wall and junctions	[05]	CO1	L1
(b)	Earthwork in excavation	[05]	CO1	L3
(c)	Lime concrete in foundation	[05]	CO1	L2
(d)	First class brickwork in foundation	[10]	CO2	L2
(e)	Damp proof course	[05]	CO2	L2
(f)	First class brick work in superstructure	[20]	CO1	L1

Sign of CI

Sign of CCI

Sign of HOD

P. T. O

USN



Internal Assessment Test 1 – March 2019

Sub:	Quantity Survey and contract Management					Sub Code:	15CV81	Branch:	Civil
Date:	5/3/2019	Duration:	90 min	Max Marks:	50	Sem/Sec:	VIII – A & B		OBE

Answer all questions

		MARKS	CO	RBT
1	Determine the quantities of the following items.	[04]	CO1	L1
(a)	C/C distance of longwall and shortwall (or) total c/c length of wall and junctions	[06]	CO1	L3
(b)	Earthwork in excavation	[04]	CO1	L2
(c)	Lime concrete in foundation	[06]	CO2	L2
(d)	First class brickwork in foundation	[02]	CO2	L2
(e)	Damp proof course	[02]	CO2	L2
(f)	First class brick work in superstructure			

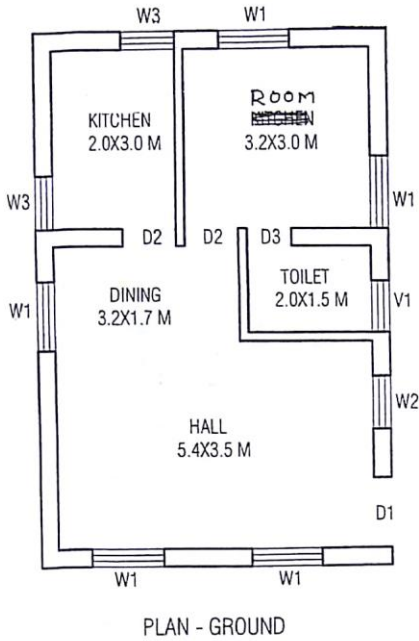
Sign of CI

Sign of CCI

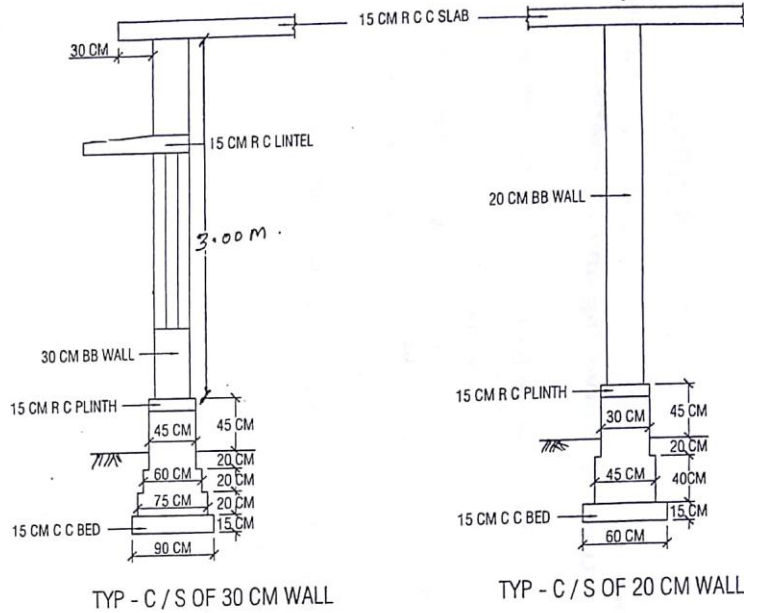
Sign of HOD

P. T. O

FIG - 1

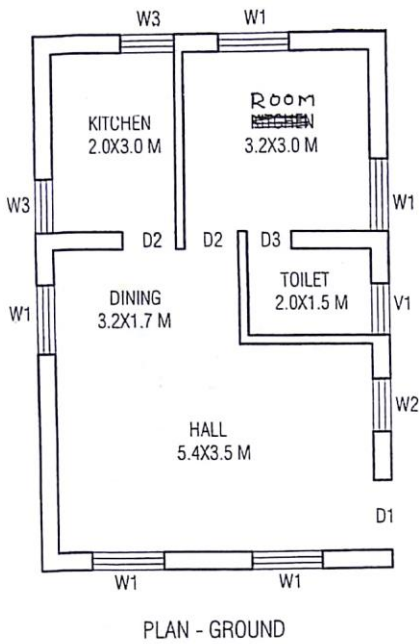


INDEX	
DOORS	
D1	= 1.2X2.1 M
D2	= 0.9X2.1 M
D3	= 0.75X2.1 M
WINDOWS	
W1	= 1.2X1.5 M
W2	= 0.9X1.5 M
W3	= 0.9X0.9 M
VENTILATORS	
V1	= 0.9X0.6 M

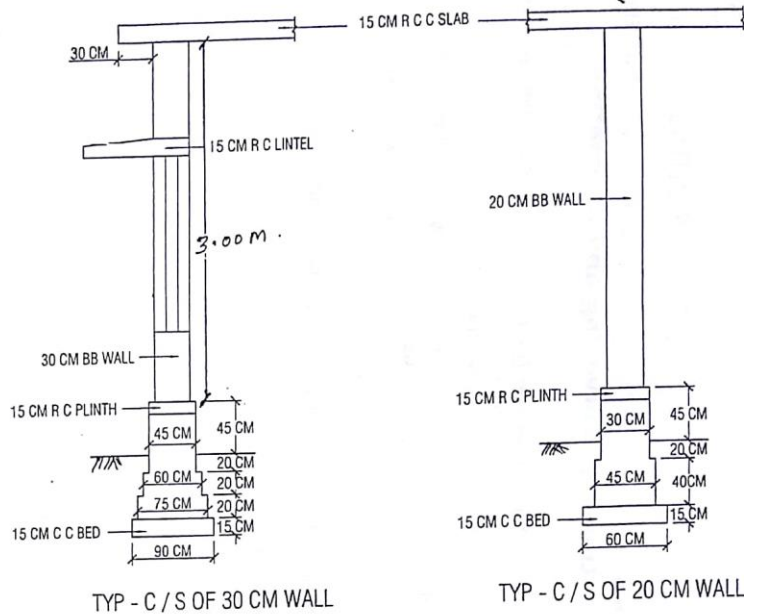


RESIDENTIAL BUILDING.
READ ALL DIMENSIONS

FIG - 1



INDEX	
DOORS	
D1	= 1.2X2.1 M
D2	= 0.9X2.1 M
D3	= 0.75X2.1 M
WINDOWS	
W1	= 1.2X1.5 M
W2	= 0.9X1.5 M
W3	= 0.9X0.9 M
VENTILATORS	
V1	= 0.9X0.6 M



RESIDENTIAL BUILDING.
READ ALL DIMENSIONS