

USN

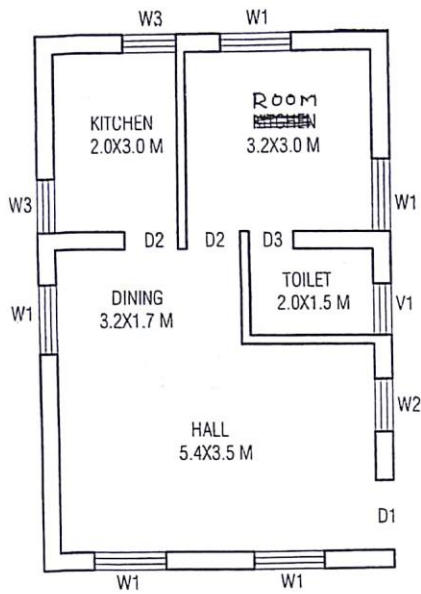
--	--	--	--	--	--	--	--	--	--

Internal Assessment Test 1 – March 2019

Sub:	Quantity Survey and contract Management	Sub Code:	15CV81	Branch:	Civil
Date:	5/3/2019	Duration:	90 min	Max Marks:	50
Sem/Sec:	VIII – A & B				OBE

Answer all questions

1	Determine the quantities of the following items.	MARKS	CO	RBT
			(a)	C/C distance of long wall and short wall (or) total c/c length of wall and junctions
(b)	Earthwork in excavation	[05]	CO1	L3
(c)	Lime concrete in foundation	[05]	CO1	L2
(d)	First class brickwork in foundation	[10]	CO2	L2
(e)	Damp proof course	[05]	CO2	L2
(f)	First class brick work in superstructure	[20]	CO1	L1

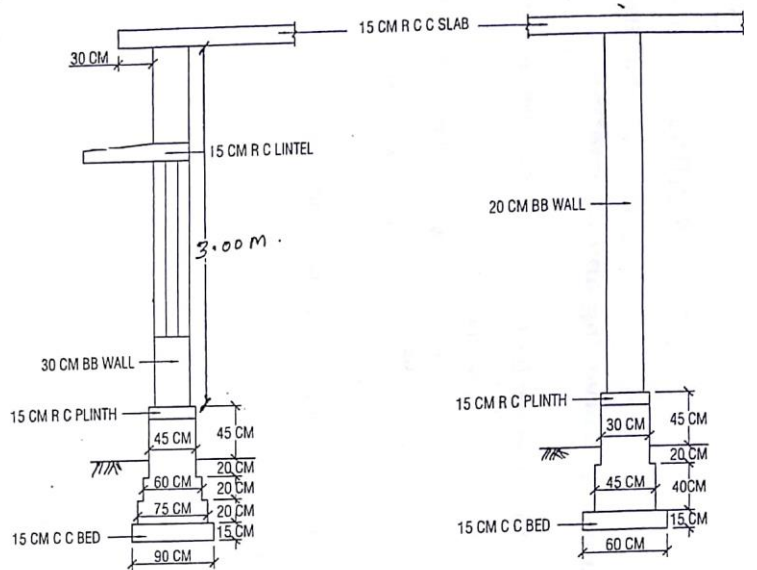


PLAN - GROUND

INDEX

DOORS	
D1 = 1.2X2.1 M	
D2 = 0.9X2.1 M	
D3 = 0.75X2.1 M	
WINDOWS	
W1 = 1.2X1.5 M	
W2 = 0.9X1.5 M	
W3 = 0.9X0.9 M	
VENTILATORS	
V1 = 0.9X0.6 M	

FIG - 1



TYP - C / S OF 30 CM WALL

TYP - C / S OF 20 CM WALL

RESIDENTIAL BUILDING.
READ ALL DIMENSIONS

SOLUTION

Total c/c length of 30cm wall =

$$2*(.15+3.5+.2+1.5+.3+3+.15)+3*(.15+5.4+.15) = \mathbf{34.7}$$

No. Of junctions = 2

Total c/c length of 20cm wall =

$$(.15+3+.15)+(.15+1.5+.1)+(.1+2+.15)= \mathbf{7.3}$$

No. Of junctions = 4

Marks
2
1
1
1

item no.	particulars of item	no.	L	B	H	Q	remarks	Marks
1	earthwork in excavation							
	30cm wall	1	33.8	0.9	0.75	22.82	L=34.7-2*(.9/2), H=.15+.2+.2+.2	2
	20cm wall	1	5.5	0.6	0.75	2.48	L=7.3-4*(.9/2)	2
						25.29		1
2	lime concrete in foundation							
	30cm wall	1	33.8	0.9	0.15	4.56	L=34.7-2*(.9/2)	2
	20cm wall	1	5.5	0.6	0.15	0.50	L=7.3-4*(.9/2)	2
						5.06		1
3	First class brickwork in foundation							
	30cm wall STEP I	1	33.95	0.75	0.2	5.09	L=34.7-2*(.75/2)	1
	STEP II	1	34.1	0.6	0.2	4.09	L=34.7-2*(.6/2)	1
	PLINTH	1	34.25	0.45	0.65	10.02	L=34.7-2*(.45/2)	1
	20cm wall STEP I	1	5.8	0.45	0.2	0.52	L=7.3-4*(.75/2)	2
	STEP I	1	6.1	0.45	0.2	0.55	L=7.3-4*(.6/2)	2
	PLINTH	1	6.4	0.3	0.65	1.25	L=7.3-4*(.45/2)	2
						21.52		1
4	Damp proof course							
	30cm wall	1	34.25	0.45		15.41	L=34.7-2*(.45/2)	1
	20cm wall	1	6.4	0.3		1.92	L=7.3-4*(.45/2)	1
	deduction D1	1	1.2	0.45		0.54		
	D2	2	0.9	0.45		0.81		
	D3	1	0.75	0.45		0.34		2
						15.65		1
5	Ist class brickwork in superstructure							
	30cm wall	1	34.4	0.3	3	30.96	L=34.7-2*(.3/2)	2
	20cm wall	1	6.7	0.2	3	4.02	L=7.3-4*(.3/2)	3
	DEDUCT							

	D1	1	1.2	0.3	2.1	0.76		1
	D2	2	0.9	0.3	2.1	1.13		1
	D3	1	0.75	0.3	2.1	0.47		1
	W1	5	1.2	0.3	1.5	2.70		1
	W2	1	0.9	0.3	1.5	0.41		1
	W3	2	0.9	0.3	0.9	0.49		1
	V1	1	0.9	0.3	0.6	0.16		1
	LINTEL OVER							
	D1	1	1.5	0.3	0.15	0.07	bearing 15cm	1
	D2	2	1.2	0.3	0.15	0.11		1
	D3	1	1.05	0.3	0.15	0.05		1
	W1	5	1.5	0.3	0.15	0.34		1
	W2	1	1.2	0.3	0.15	0.05		1
	W3	2	1.2	0.3	0.15	0.11		1
	V1	1	1.2	0.3	0.15	0.05		1
						28.09		1