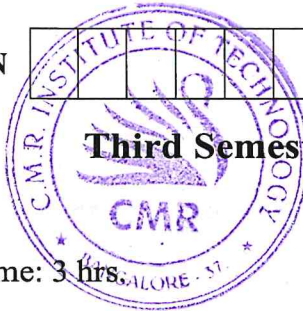


CBCS SCHEME

USN

--	--	--	--	--	--	--	--

15EC34



Third Semester B.E. Degree Examination, July/August 2021 Network Analysis

Time: 3 hrs.

Max. Marks:80

Note: Answer any FIVE full questions.

- 1 a. Calculate the voltage 'V' across 20Ω resistor for the circuit shown in Fig.Q1(a) using source transformation.

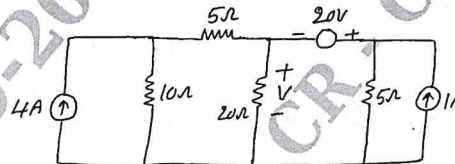


Fig.Q1(a)

(08 Marks)

- b. Find the value of a single resistor to replace the network between terminals A and B of the network shown in Fig.Q1(b) using star-delta transformation.

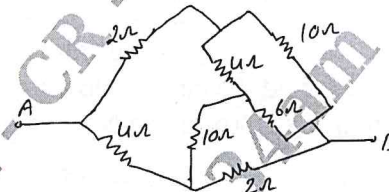


Fig.Q1(b)

(08 Marks)

- 2 a. Determine the nodal voltages V_1, V_2, V_3 for the networks shown in Fig.Q2(a).

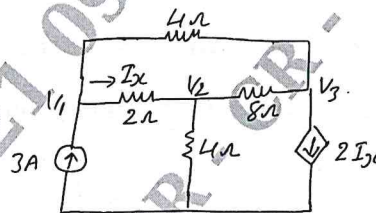


Fig.Q2(a)

(08 Marks)

- b. In the circuit shown in Fig.Q2(b), determine V_2 , which results zero current through 4Ω resistor using Mesh analysis.

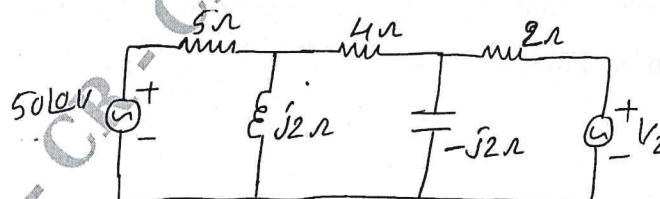


Fig.Q2(b)

(08 Marks)

Important Note : 1. On completing your answers, compulsorily draw diagonal cross lines on the remaining blank pages.
2. Any revealing of identification, appeal to evaluator and /or equations written eg. 42+8 = 50, will be treated as malpractice.

- 3 a. Using Millman's theorem find the current through $(2 + j3)\Omega$ impedance for the circuit shown in Fig.Q3(a).

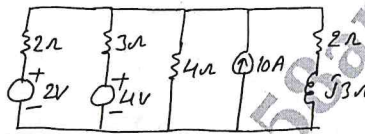


Fig.Q3(a)

(07 Marks)

- b. In the network shown in Fig.Q3(b), determine current in 5Ω resistor and then verify reciprocity theorem.

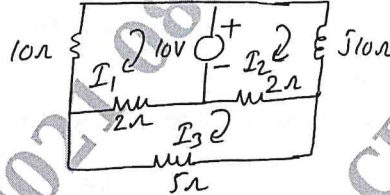


Fig.Q3(b)

(09 Marks)

- 4 a. Find the current following through 7.5Ω resistor using superposition theorem in the networks shown in Fig.Q4(a).

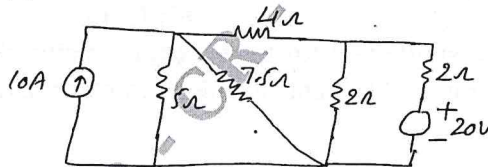


Fig.Q4(a)

(08 Marks)

- b. State Norton's theorem and find the current flowing through $Z_L = 10 - j7.5$ connected across AB in the circuit shown in Fig.Q4(b) using North's theorem.

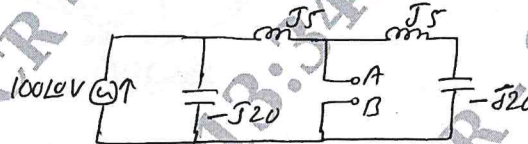


Fig.Q4(b)

(08 Marks)

- 5 a. In the circuit shown in Fig.Q5(a) switch 'K' is changed from position 1 to 2 at $t = 0$. Steady state condition having reached before switching. Find the values of i , $\frac{di}{dt}$ and $\frac{d^2i}{dt^2}$ at $t = 0^+$.

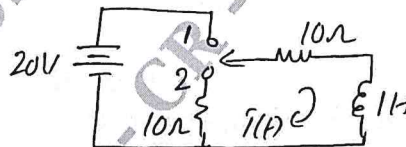


Fig.Q5(a)

(08 Marks)

- b. For the circuit given in Fig.Q5(b) steady state is reached with switch 'K' open and at $t = 0$ switch is closed. Find the values of i_1 , i_2 , $\frac{di_1}{dt}$ and $\frac{di_2}{dt}$ at $t = 0^+$.

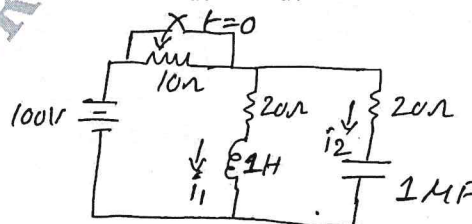


Fig.Q5(b)

(08 Marks)

- 6 a. For the circuit shown in Fig.Q6(a) obtain the equation for $i_1(t)$ and $i_2(t)$ when the switch is closed at $t = 0$. Use Laplace transforms. (08 Marks)

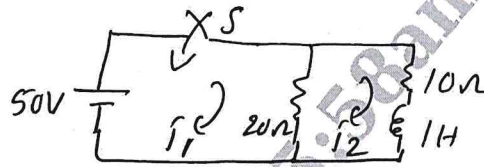


Fig.Q6(a)

- b. Obtain the Laplace transform of the function shown in Fig.Q6(b). (08 Marks)

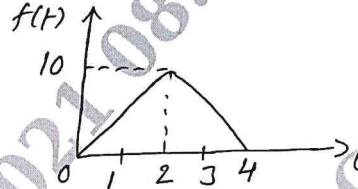


Fig.Q6(b)

- 7 a. Define the following terms : i) Resonance ii) Q – Factor iii) Selectivity of series RLC circuit iv) Band width. (08 Marks)
- b. A series RLC circuit consists of a 50Ω resistance, $0.2H$ inductance and $10\mu F$ capacitor with an applied voltage of $20V$. Determine the resonant frequencies. Find the Q – factor of the circuit. Compute the lower and upper frequencies limit and also the Band width of the circuit. (08 Marks)
- 8 a. For the circuit shown in Fig.Q8(a). Find the two values of capacitor for the resonance. Derive the formula used consider $f = 50Hz$. (08 Marks)

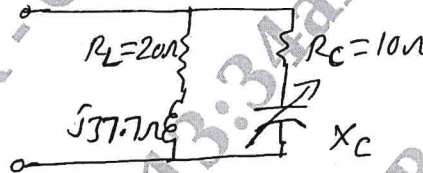


Fig. Q8(a)

- b. Determine the value of RC in the network shown in Fig.Q8(b). (08 Marks)

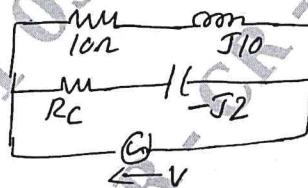


Fig.Q8(b)

CMRIT LIBRARY
BANGALORE - 560 037

- 9 a. Derive the Y-parameters in terms Z – parameters. (08 Marks)
- b. Determine the admittance parameters of the 'T' networks shown in Fig.Q9(b). (08 Marks)

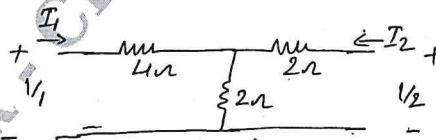


Fig.Q9(b)

- 10 a. Obtain the expression of Z-parameters in terms of transmission parameters. (08 Marks)
- b. Determine T – parameters interms of Z – parameters and hence show that $AD - BC = 1$. (08 Marks)
