

## CBCS SCHEME

USN

--	--	--	--	--	--	--	--	--	--

18EE643

Sixth Semester B.E. Degree Examination July/August 2022  
(ELECTRICAL & ELECTRONICS ENGINEERING)

**COMPUTER AIDED ELECTRICAL DRAWING**

Time: 3 Hrs

Max. Marks: 100

**Instruction:**

1. Answer Question 1 or 2 and 3 from PART-A
2. Answer Question 4 or 5 from PART-B
3. Use of CAD tool that satisfies that requirement of the syllabus is permitted.  
Suitable data may be assumed if not given.

**Part A**

1. Draw the armature winding of a DC machine with 4 poles, 14 slots, double layer progressive lap winding. Show on the developed winding diagram, the poles, polarity of poles, direction of rotation of the armature, direction of Emf induced/current in the conductors, sequence diagram, and position & polarity of brushes. (25 Marks)
- OR**
2. Draw the developed winding diagram of an AC machine having the following details. Speed = 3000rpm No of slots = 24 Frequency = 50 Hz No. of Phase = 3 Phase spread:  $60^\circ$  Phase sequence: RYB  
Type of Winding = double layer, lap short pitched by 1 slot connected in star. (25 Marks)
  3. Draw the single line diagram using ISI symbols, for a 110kV / 11kV MUSS with the following data:  
110kV incoming lines, Two  
Line OCB's 110 kV, Two  
Transformer 110kV/11kV, Two  
L.T OCB's for transformer, Two  
Duplicate bus bars on H.T & L.T sides  
Bus coupler on H.T side only  
Feeders 11 kV, Six  
L.T circuit breaker for feeders, Six  
Earthing switch at incoming lines, Two  
Wave trap at incoming lines, Two  
Coupling condenser (C.C) at incoming lines, Two station supply transformer 11kV/415kV.  
Show the positions of CT, PT, Isolating Switches, Lightning arrestors, circuit breakers (25 Marks)

## PART B

4. Draw the following views of a 3 phase, core type, 250kVA, 11kV/400V transformer:

Front elevation right half in section

Plan right half in section

Dimensions of core and winding details are given below:

**Core:** 3 stepped

Diameter of circumscribing circle = 24 cm

Distance between adjacent core centers = 42.5 cm

Height of the yoke = 25 cm

Total height of the transformer = 100 cm

**LV winding:** Outer diameter of LV coil = 28.3 cm

Inner diameter of LV coil = 25 cm

Height of LV winding = 43.5 cm

Number of turns per phase = 12

**HV winding:** Outer diameter of HV coil = 41.5 cm

Inner diameter of HV coil = 34.3 cm

Height of HV winding = 43.5 cm

Number of turns per phase = 572

(50 Marks)

OR

5. Following are the details of a main pole of a DC machine. Draw to suitable scale

a) Elevation with right half in section

b) Plan with right half in section

Number of poles- 4

Height of pole-140mm

Width of the pole-127mm

Length of the pole -170mm

Armature diameter-400mm

Pole arc/ pole pitch =0.67

Number of turns per pole -1890

Conductor area -1.77mm<sup>2</sup>

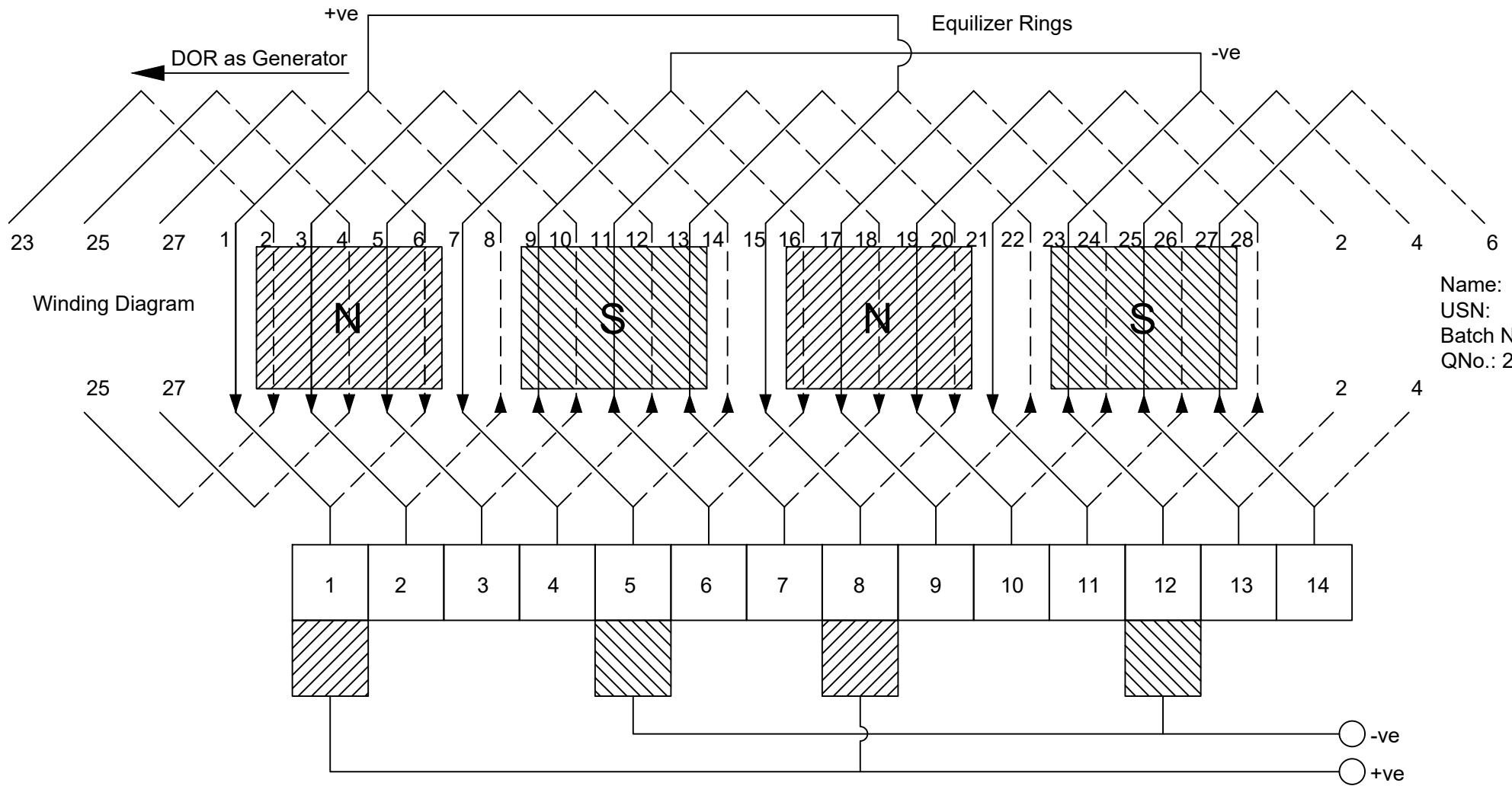
Depth of the winding-45mm

Height of the winding-110mm

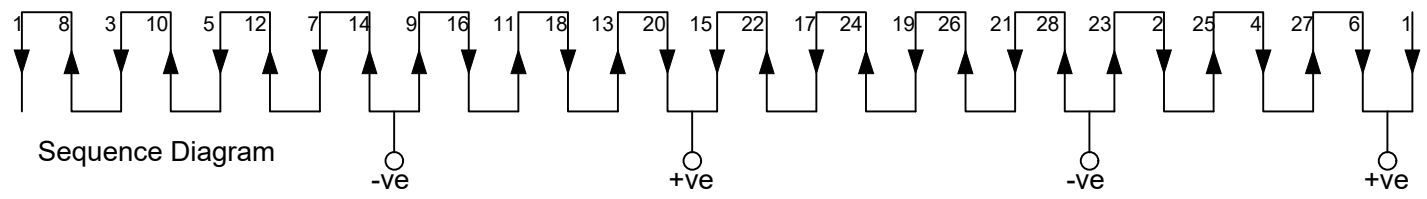
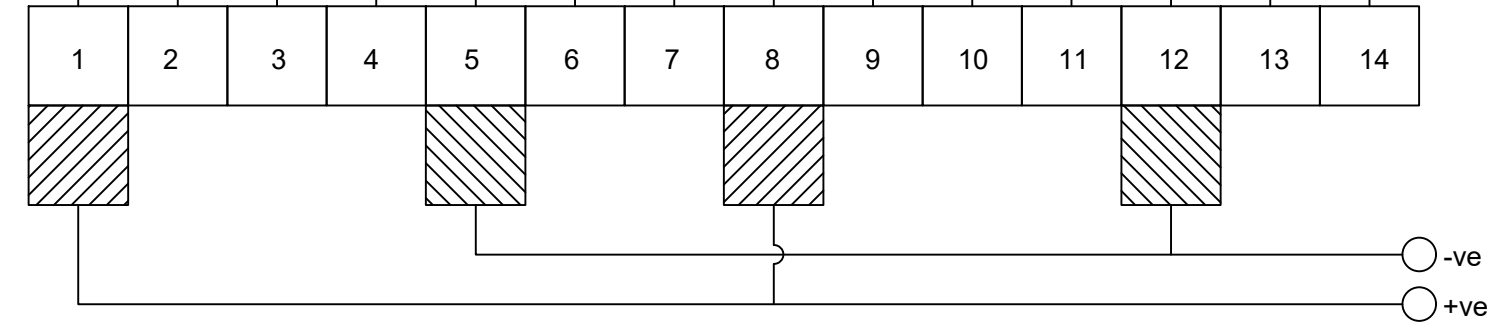
(Missing data may be proportionally assumed)

(50 Marks)

\* \* \* \* \*

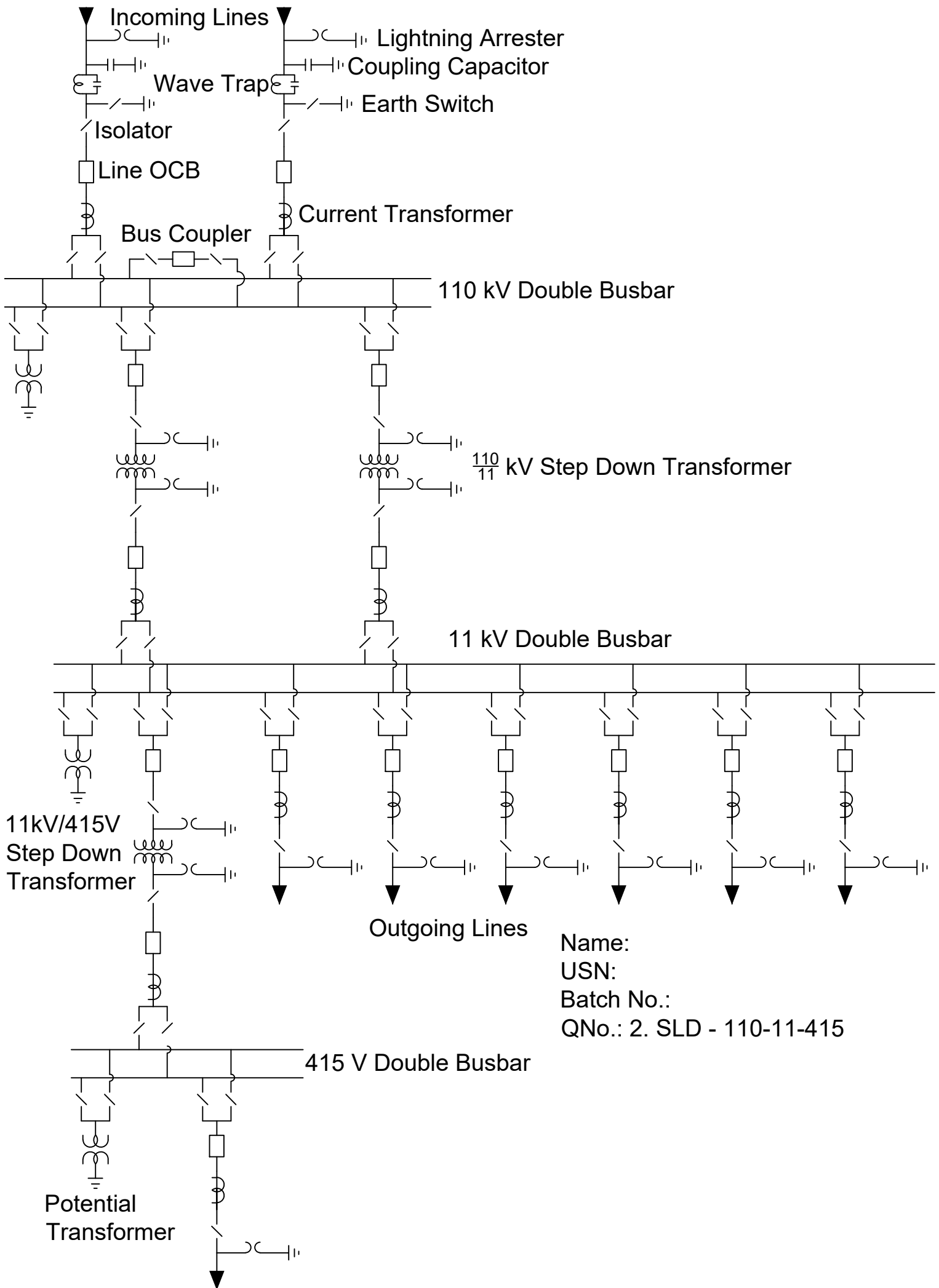


Name:  
 USN:  
 Batch No.:  
 QNo.: 2. DCW - DLSPL

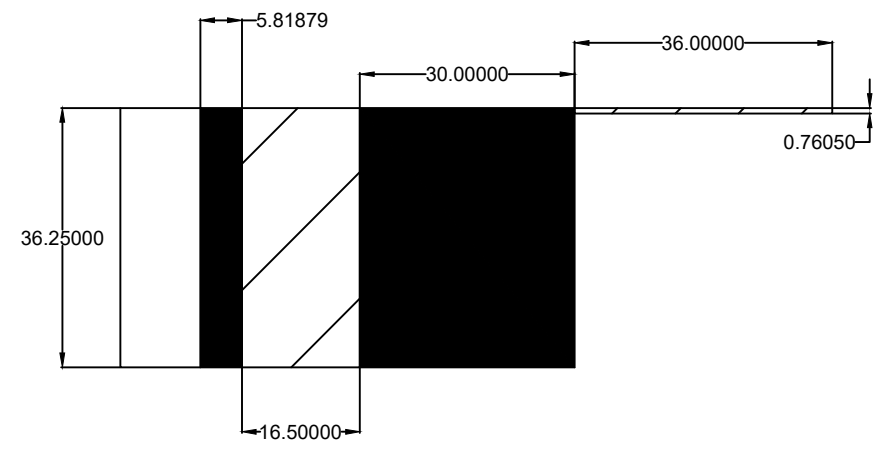
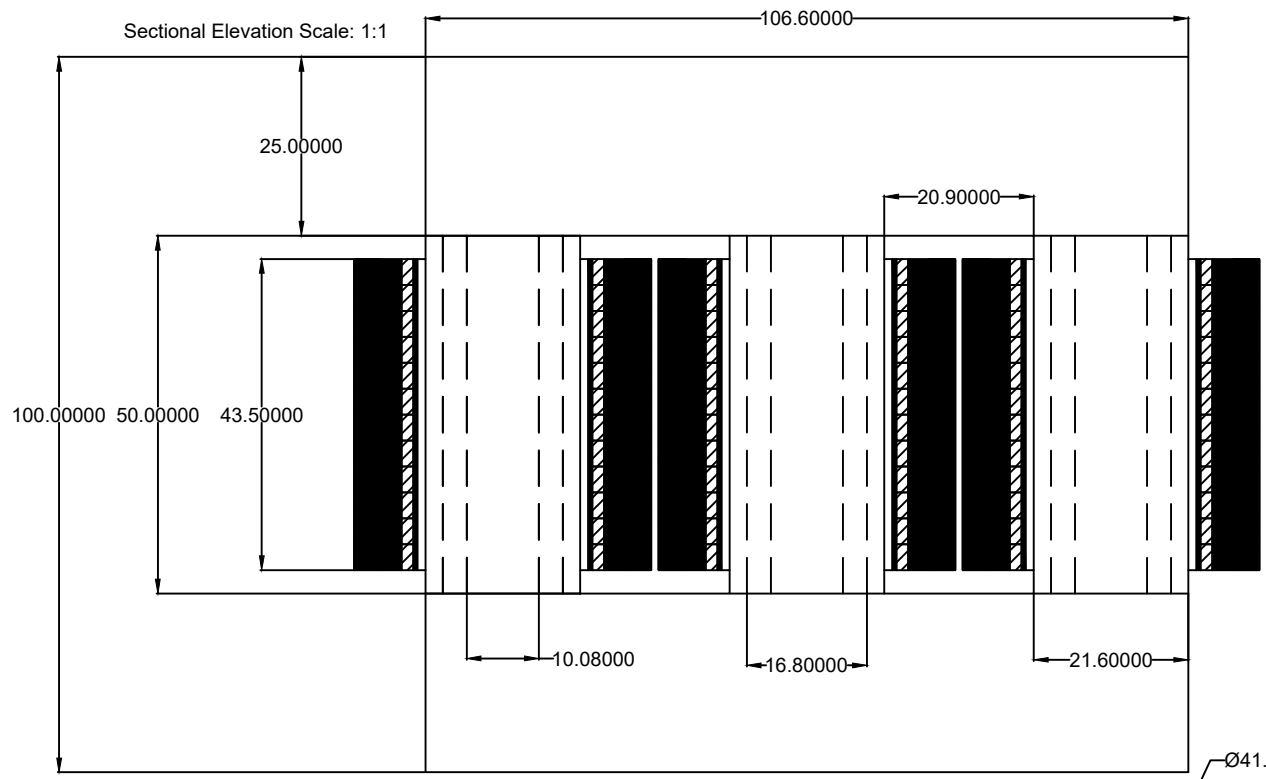


Sequence Diagram

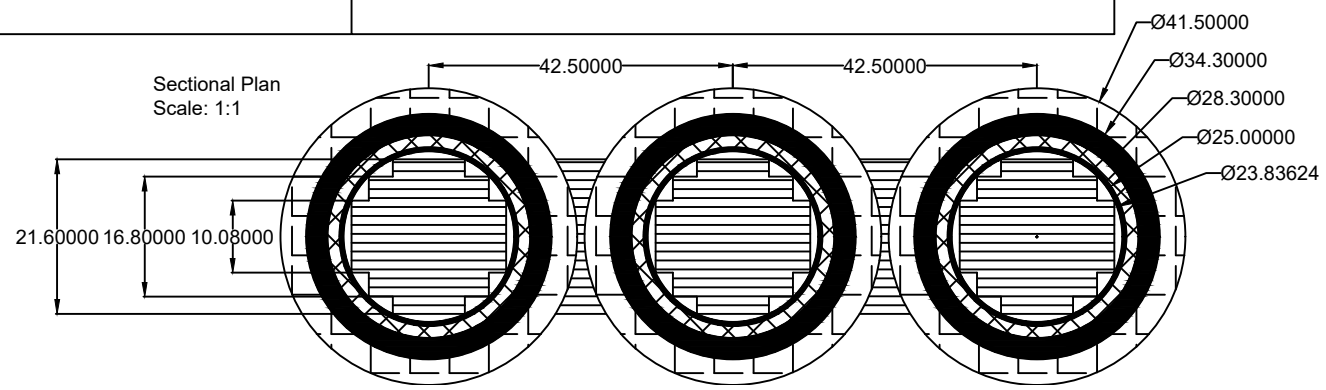
Winding Diagram



Name:  
 USN:  
 Batch No.:  
 QNo.: 2. SLD - 110-11-415



Arrangement of LV and HV Coil Scale: 1:10  
 Shown one turn each of LV out 12 turns and HV out of 572 turns



Name:  
 USN:  
 Batch:  
 QNo.: 5. T - TCTSESP